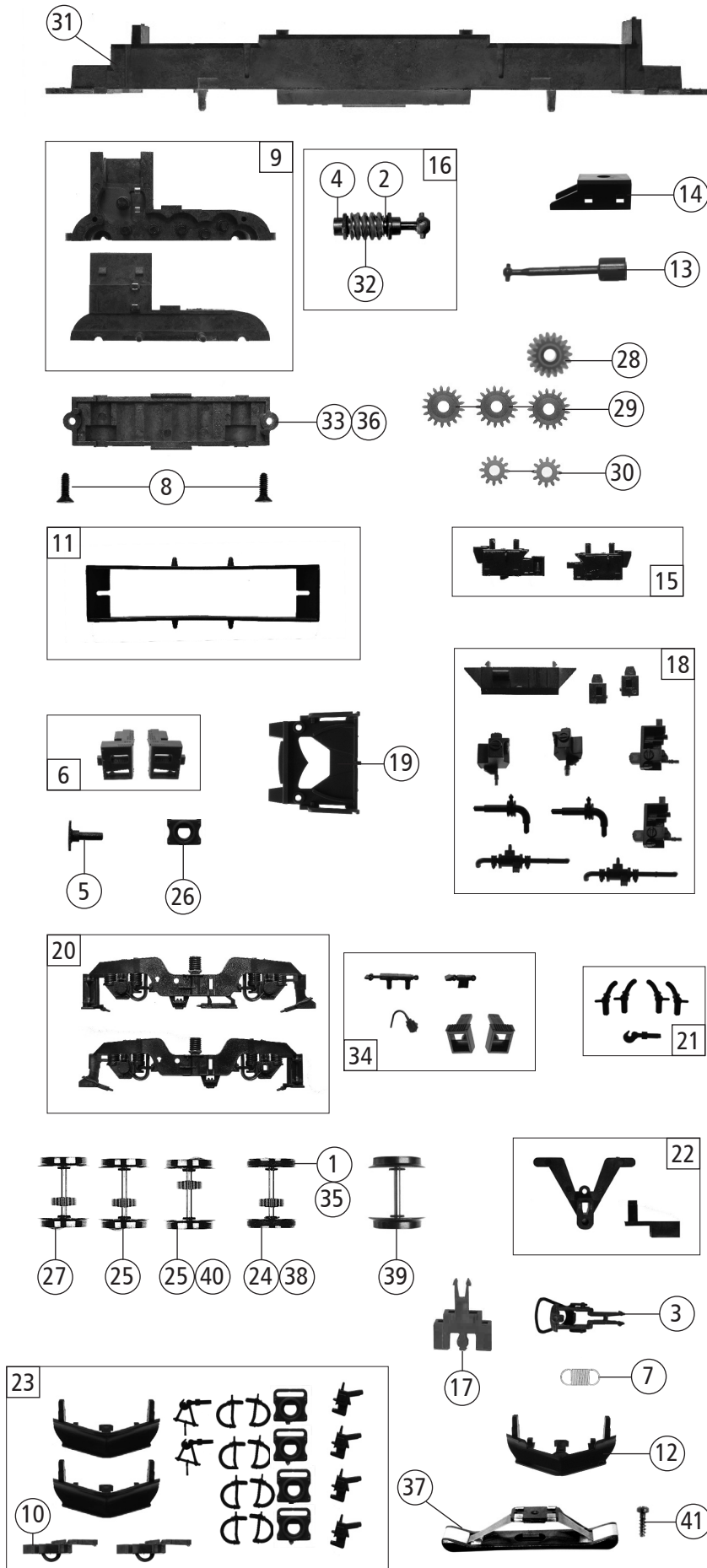


| Pos. Nr.<br>Pos.no. | Beschreibung<br>Description  | Art.-Nr.<br>Art.no. | Preisgruppe<br>Price bracket |
|---------------------|--|---------------------|------------------------------|
| 7500005             | DPB RH 1216  |                     |                              |
| 7510005             |  |                     |                              |
| 7520005             |  |                     |                              |
| 1                   | Gehäuse kpl. Betr.nr. 1216 940-7<br>Body ass. compl. Loco No. 1216 940-7             | 149613              | 38                           |
| 2                   | Stromabnehmer DSA 200-350<br>Pantograph  | 85443               | 19                           |
| 3                   | Motorkontaktfeder D=2,4 L=14,3 mm<br>Motor contact spring                            | 145560              | 4                            |
| 4                   | Motorkontaktfeder D=2,4 L=7,15 mm<br>Motor contact spring                            | 145561              | 4                            |
| 5                   | Motordämpfer<br>Motor silencer   | 113376              | 4                            |
| 6                   | Anschlag<br>Stop   | 123876              | 3                            |
| 7                   | Brückenstecker TVS PLUX-16<br>Jumper   | 133241              | 10                           |
| 8                   | Motordistanzrahmen<br>Motor spacer frame   | 146021              | 5                            |
| 9                   | GF-Schraube M2x4 mm<br>Self-tapping screw  | 114877              | 3                            |
| 10                  | Dachdeckel lackiert<br>Roof cover painted  | 128935              | 6                            |
| 11                  | TS - Dachleitungen und Horn<br>Part set roof wires and horn                          | 122777              | 6                            |
| 12                  | TS - Dachleitungen<br>Part set roof wires  | 122778              | 6                            |
| 13                  | TS - Lichtleiter<br>Part set light conductor   | 122779              | 8                            |
| 14                  | Stirn + Seitenfenster<br>Front and side window                                       | 136171              | 7                            |
| 15                  | TS - Scheinwerferbügel und Spitzenlicht<br>Part set of headlight frame and top light | 138702              | 12                           |
| 16                  | Scheibenwischer links und rechts<br>Windscreen wiper left and right                  | 122783              | 6                            |
| 17                  | TS - Lichtabdeckung<br>Part set light cover  | 122786              | 8                            |
| 18                  | TS - Griffstangen<br>Part set handrails  | 122787              | 6                            |
| 19                  | Stirntrittbrett<br>Front treadle   | 149612              | 3                            |
| 20                  | SK-Schraube M1,6x7 mm<br>SK-Screw  | 116493              | 3                            |
| 21                  | TS - Lüftergitter<br>Part set ventilator grills                                      | 122800              | 6                            |
| 22                  | TS - LZB Antennen<br>Part set antenna  | 122803              | 6                            |
| 23                  | Führerstand lackiert<br>Driver's cab painted   | 124808              | 6                            |
| 24                  | Motor mit 2 Schwungmassen KM<br>Motor with 2 flywheels                               | 146020              | 25                           |
| 25                  | TS - Griffstangen<br>Part set handrails  | 124795              | 6                            |
| 26                  | Drahtabdeckung<br>Thread cover   | 122813              | 4                            |
| 27                  | Platine kpl. mit LED-Platinen<br>PCB ass. with LED-PCB                               | 142210              | 28                           |
| 28                  | Steckdose<br>Socket  | 141163              | 3                            |
| 29                  | TS - Basisplatten<br>Part set of base plates   | 128937              | 6                            |
| 30                  | TS - Isolatoren 1<br>Part set isolator 1   | 122963              | 9                            |
| 31                  | TS - Isolatoren 2<br>Part set isolator 2   | 122964              | 6                            |
| 32                  | Kardanschale kurz<br>Cardan reception short  | 87129               | 4                            |
| 33                  | Abdeckblech<br>Cover sheet   | 149614              | 12                           |
| 34                  | Griff seitlich<br>Lateral handrail   | 149615              | 3                            |
| 35                  | Antenne<br>Antenna   | 141152              | 3                            |
| <b>Sound</b>        |  |                     |                              |
| 36                  | Sounddecoder<br>Sound-decoder  | 147377              | 39                           |
| 37                  | Lautsprecher<br>Loudspeaker  | 129524              | 13                           |
| 38                  | Soundbox<br>Sound box  | 139681              | 6                            |
| 39                  | Platine kpl. mit LED-Platinen f. Sound<br>PCB ass. with LED-PCB for sound            | 142848              | 28                           |
| 40                  | Adapterplatine<br>Adaptor PCB  | 131375              | 12                           |



| Pos. Nr.<br>Pos.no.    | Beschreibung<br>Description   | Art.-Nr.<br>Art.no. | Preisgruppe<br>Price bracket |
|------------------------|---|---------------------|------------------------------|
| 750005                 | DPB RH 1216   |                     |                              |
| 751005                 |   |                     |                              |
| 752005                 |   |                     |                              |
| 1                      | Haftringsatz 10Stk 12,5-13,8mm<br>Set with traction tyre 10pieces                 | 40066               | ---                          |
| 2                      | Beilagscheibe<br>Washer   | 86108               | 3                            |
| 3                      | Standardkupplung<br>Standard coupling   | 89246               | 6                            |
| 4                      | Lager für Schneckenachse<br>Bearing for worm gear axle                            | 89749               | 6                            |
| 5                      | Puffer eckig<br>Rectangular buffer  | 122789              | 3                            |
| 6                      | Pufferschürzen li.+ re.<br>Buffer skirts L+R                                      | 149611              | 6                            |
| 7                      | Zugfeder<br>Draw spring   | 86208               | 3                            |
| 8                      | SK-Schraube M1,6x4 mm<br>SK-Screw   | 115161              | 3                            |
| 9                      | Getriebesatz 2-teilig<br>Gear set 2-parts   | 147619              | 11                           |
| 10                     | Kurzkupplung<br>Short coupling  | 115550              | 6                            |
| 11                     | Kontakthalter m. Litzen<br>Contact holder with leads                              | 137826              | 9                            |
| 12                     | Schneepflug<br>Snow plow  | 122820              | 6                            |
| 13                     | Kardanwelle<br>Cardan shaft   | 146018              | 4                            |
| 14                     | Schneckendeckel<br>Worm gear cover  | 122822              | 4                            |
| 15                     | Batteriekasten 1+2<br>Battery box 1+2   | 147135              | 6                            |
| 16                     | Schneckensatz mit Kardankugel<br>Set of worm gear incl. cardan ball               | 122829              | 13                           |
| 17                     | Kuppeladapter<br>Coupling adapter   | 140452              | 7                            |
| 18                     | TS-Sandkasten<br>Part set sand box  | 122952              | 8                            |
| 19                     | Pufferbohle<br>Buffer beam  | 149610              | 6                            |
| 20                     | Drehgestellblende 1+2 bedruckt<br>Bogie frame 1+2 printed                         | 147136              | 8                            |
| 21                     | TS - für Pufferbrüst für Betrieb<br>Part set buffer beam for service              | 127630              | 4                            |
| 22                     | TS - Kupplung<br>Part set coupling  | 122957              | 6                            |
| 23                     | Zurüstbeutel<br>Bag with accessories  | 131540              | 10                           |
| 24                     | Radsatz 1 m. Zahnrad m. 2 Haftringe<br>Wheelset 1 w.gear wheel w.2 traction tyres | 147139              | 12                           |
| 25                     | Radsatz 2/3 m. Zahnrad o. Haftring<br>Wheelset 2/3 w.gear wheel w/o tract.tyre    | 147138              | 11                           |
| 26                     | Pufferflansch ohne Griff<br>Buffer flange w/o grip                                | 122968              | 3                            |
| 27                     | Radsatz 4 m. Zahnrad o. Haftring<br>Wheelset 4 w. gear wheel w/o traction tyre    | 147137              | 11                           |
| 28                     | Schnecken Zahnrad Z=19/17<br>Worm gear wheel                                      | 86413               | 5                            |
| 29                     | Zahnrad Z=17 M=0,4<br>Gear wheel  | 86418               | 5                            |
| 30                     | Zahnrad Z=12 M=0,4<br>Gear wheel  | 94953               | 3                            |
| 31                     | Grundrahmen<br>Base frame   | 142912              | 16                           |
| 32                     | Schnecke<br>Worm gear   | 86702               | 6                            |
| 33                     | Getriebeboden<br>Gears bottom   | 147644              | 8                            |
| 34                     | TS-Blendesteckteile<br>Part set-Bogie plug-in parts                               | 122956              | 5                            |
| <b>AC-Wechselstrom</b> |   |                     |                              |
| 35                     | Haftringsatz 10Stk 12,5-15,3mm<br>Set with traction tyre 10pieces                 | 40075               | ---                          |
| 36                     | AC-Getriebeboden<br>AC-Gear bottom  | 130040              | 8                            |
| 37                     | Schleifer 42 mm<br>Slider   | 86030               | 14                           |
| 38                     | Radsatz m. Zahnrad m. 2 Haftringe AC<br>Wheelset w.gear wheel w.2 traction tyres  | 147143              | 12                           |
| 39                     | Radsatz o. Zahnrad o. Haftring AC<br>Wheelset w/o gear wheel w/o traction tyre    | 147144              | 10                           |
| 40                     | Radsatz m. Zahnrad o. Haftring<br>Wheelset w. gear wheel w/o traction tyre        | 147145              | 11                           |
| 41                     | PT-Schraube M1,5x5 mm<br>PT-Screw   | 108137              | 3                            |